



Do your business in style

Developers:

**Vishwakarma Corporation**

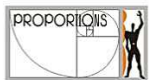
Mob. +91 81400 39960

E-mail : [info\\_silverinfrahub@yahoo.com](mailto:info_silverinfrahub@yahoo.com)

Architect

Amrish mandlik

Tel. 9879234928



eyecodeign 079 4002 6743, 099252 32528



## Multiply wealth at Silver Infra Hub



Commerce is an integral part of our lives. May it be office, shop or commercial complex, the space from where we operate our business, defines the success of our business.



The way Gujarat is progressing towards commercial growth, visit any corner of the state and you will find industrious people and equally throbbing industrial vistas around. One of the most prominent among these is Changodar near Ahmedabad.

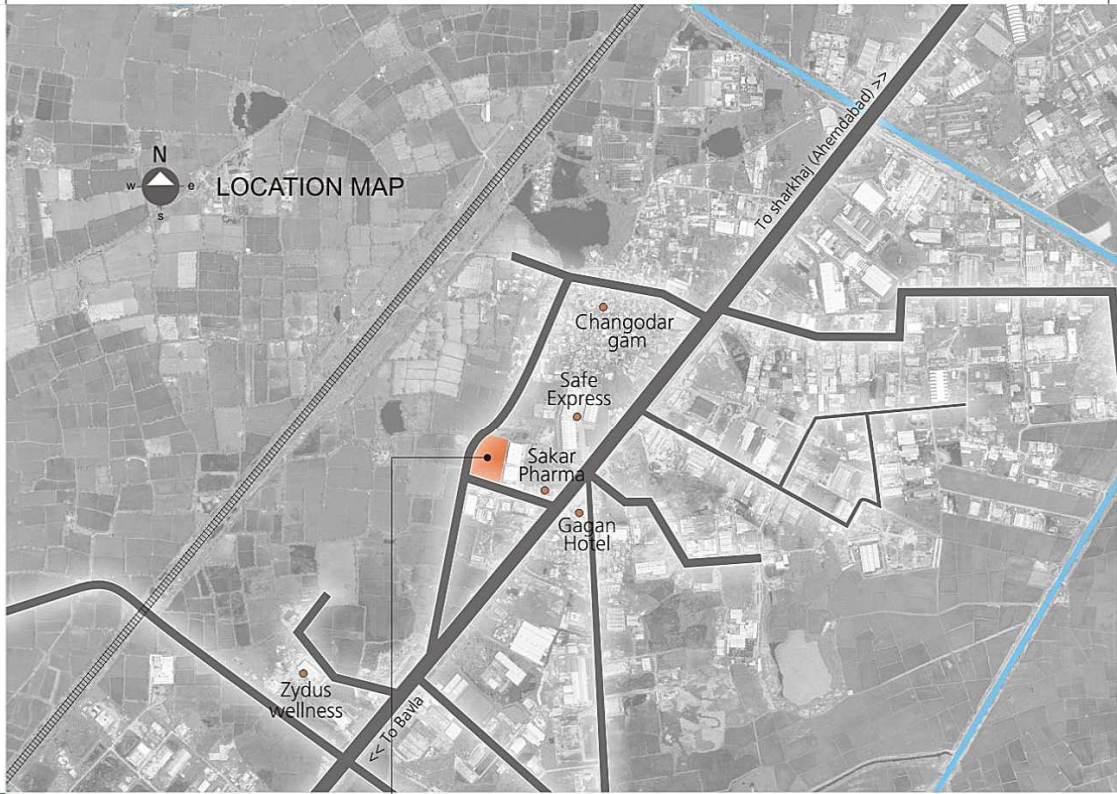


### Specifications :

- RCC frame structure design
- Double coat plaster outside
- Single coat finish plaster inside
- All shed with height of 17 ft.
- Glazed tiles in toilet UP TO 4 ft.
- I.P.S. flooring with trimex
- Every shade has facility of independent toilet
- Attractive elevation in every shade

### Facilities:

- N. A., N. O. C. title clear
- Beautiful location
- 24 hour water supply
- 24x7 hour security facility
- Planning with attractive elevation
- R.C.C. road and street lights in estate
- 3 phase electrical connection
- Well planned infrastructure with drainage facility



Opp. Gagan Hotel, B/H. Safe Express & Sakar Pharma,  
N.H. - 8 A, Changodar, Ahmedabad, Gujarat.

### NOTES :

- The consultant reserves the rights to make any changes in the scheme.
- Maintenance deposit and documentation expenditures will be borne by the member.
- If the payment of a member does not reach in time, 10 % of the amount he has paid will be deducted and the same will be returned after a new member is appointed.
- G.E.B. and other legal charges will be borne by member separately.
- Line connection charge for 6 H.P. will be borne by member separately.
- Any work other than specifications will be considered as extra work, and the payment for the same will be required to be paid in advance.
- Any outside change will not be allowed. Member will have to abide by the opinion of architect and engineers in the technical matters. Developer reserves the right to make any change in scheme, which everyone will have to obey.
- All mandatory Government charges like stamp duty, service charge and legal charges will have to be paid by the member in decided time.
- If in case there is any change according to Corporation and Auda rules, every member will be bound to accept the same.
- The plan and information contained in the brochure are only for outline of the project. Accommodation is not a part of legal document. The jurisdiction will be Ahmedabad.

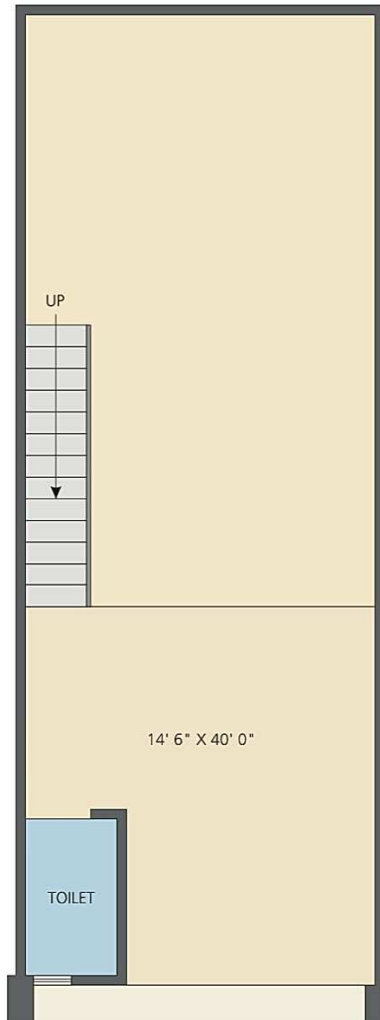
Power to reach the farthest



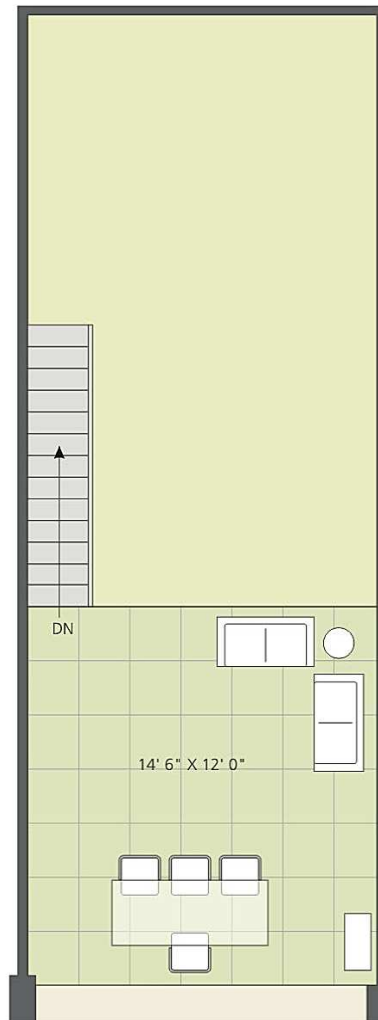
Silvar Infra Hub is appropriate for businesses such as Pharmaceuticals, Engineering, Food Processing, Textiles, Packaging, and Chemicals etc.



Silvar Infra Hub, being developed at Changodar is absolutely meant for your business. This is the most promising place for industrial, manufacturing units and warehouse sheds. And there are 75 commercial units which can be a throbbing place for variety of business.



Ground Floor Plan

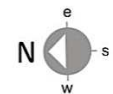


First Floor Plan

If you want to do a serious business, this is the only place where you get to own a unit. Silver Infra Hub is a place where you can fulfill your dream of multiplying your wealth.



Silver Infra Hub is a hub which keeps you apprised with everything that is new in business. You do not have to strive to find the clients or business person you want.



Layout Plan

**AREA CALCULATION**

PLOT NO.	SUPER B-UP	OPEN SPACE IN SQYDS		PLOT NO	SUPER B-UP	OPEN SPACE IN SQYDS		PLOT NO	SUPER B-UP	OPEN SPACE IN SQYDS
1	151	99		28	130			55	125	
2	146	99		29	130			56	125	49
3	143	99		30	130			57	160	71
4	140	99		31	130			58	154	
5	137	99		32	130			59	154	
6	133	99		33	130			60	149	
7	130	99		34	130			61	146	
8	127	99		35	130			62	143	
9	124	99		36	130			63	141	
10	120	99		37	130			64	138	
11	117	99		38	125			65	135	
12	113	99		39	125			66	133	
13	110	99		40	125			67	130	
14	106	99		41	125			68	127	
15	103	99		42	125			69	125	
16	100	99		43	125			70	122	
17	97	99		44	125			71	120	
18	183	386		45	125			72	118	
19	130	49		46	125			73	114	
20	130			47	125			74	112	
21	130			48	125			75	110	
22	130			49	125					
23	130			50	125			Developers: <b>Vishwakarma Corporation</b> Mob: + 91 8140039960 E-mail: <a href="mailto:info_silverinfrahub@yahoo.com">info_silverinfrahub@yahoo.com</a>		
24	130			51	125					
25	130			52	125					
26	130			53	125					
27	130			54	125					